

Please add mgf@nautinst.org to your Safe Senders' list to ensure safe receipt of all future Institute newsletters. To view this email online, view the email below.

Share   



NAUTICAL INSTITUTE NEWS

February 2018

Follow us    

Latest issue of *The Navigator* – out now!



It is probably one of the hardest skills to master, and one that takes time and patience to get right and so, shiphandling is the focus for the latest issue of *The Navigator*.

In issue 17, *The Navigator* has teamed up with several experts who have given their valuable perspectives on shiphandling methods, manoeuvres and mentoring. This includes Captain Nigel Allen FNI, who shares his experiences as a Master, Pilot and instructor and knowledge of "the complex art of shiphandling."

Good shiphandling skills are practised through gaining valuable sea-time experience - something that the new [Shiphandling Logbook](#) aims to help provide. With this issue, and [the correct tools](#), *Navigator* readers should be inspired to take advantage of every opportunity to explore and develop their shiphandling skills and knowledge.

As always, *The Navigator* is free to read online or via *The Navigator* app, and printed copies are distributed to vessels around the world.

To find issue 17 online, visit: www.nautinst.org/thenavigator

All Nautical Institute members will receive their own copy of the magazine, as well as many other benefits. To find out more about how to join us, please visit: www.nautinst.org/membership

Crew
Connect
Europe

FEATURING:

Cruise
Connect
Summit

23-24 May
Radisson blu
Hamburg

SAVE 20%
Use VIP code
FKT3422

DP news: New Certification and Accreditation Standard



The Nautical Institute offers a certification service for individuals wishing to obtain a DP Certificate, and accreditation for training centres who want to provide DP training.

Earlier this month, the 2018 version of the Dynamic Positioning Certification and Accreditation Standard was released.

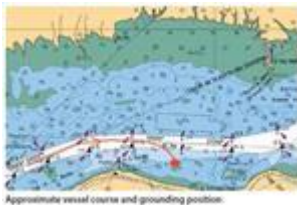
The document has been split into two sections:

Volume 1: Information relevant to individuals applying for certification

Volume 2: Information for the training centres applying for accreditation

The new standard can be found on [The Nautical Institute's Alexis Platform](#).

Aground – because the steering hadn't failed



Clear communication between pilot and bridge team is crucial, as proven in

[a recent MARS report](#).

A container vessel was sailing at 16kt in a confined waterway. The helmsman was executing orders in full follow-up mode, and two pilots and the OOW were on the bridge. After a course change, one pilot noticed that the vessel was veering to starboard. The helmsman said "not working", and the pilots believed he meant there had been a steering failure. However, they did not immediately check the rudder's operation, which was later found to be normal.

One of the pilots then selected non-follow-up mode and placed the override tiller to, as he thought, hard-a-port. In fact, because the helm tiller had not been correctly installed and gave the wrong indication, he had inadvertently placed it hard-a-starboard. Although the OOW noticed the error and made a correction, it was too late to prevent the vessel from running aground.

Several factors caused this hazardous situation, so please read, learn from and share the full report, [available free online](#) and help ensure something similar doesn't happen again.

A banner for 'The IHMA Congress' held from 25-28 June 2018 in London. The banner features the IHMA logo on the left, which includes a globe and the text 'INTERNATIONAL HARBOR MASTERS ASSOCIATION'. The main text reads 'The IHMA Congress' and '25 - 28 June 2018, London'. On the right, there is a purple section with the text 'SAVE 20%' and 'Use VIP code FKT3462NIN'.

Join us in Malta for the debate of the year



Booking is now available for The Nautical Institute's Technical Seminar and AGM 2018 in Malta on 23-24 May 2018.

The Malta Branch is hosting this year's event at the Cavalieri Art Hotel, Malta. Speakers will include industry leaders, front line practitioners and younger generation professionals from leading maritime companies such as TRANSAS, Intertanko, Carnival Corporation and the Glasgow Maritime Academy.

This gathering of experts from around the world will gather to discuss:

- Superyachts
- Technology and automation
- Maritime influences and environment
- Best practice for mariners dealing with refugees

Tickets are now available and start from only £52. [Register now](#) to avoid disappointment.

Keep up-to-date with wind farms



The Nautical Institute makes it easy for members to invest in their professional development. One of the ways we do this is through the 'Presentations' section of the exclusive [Members' Area](#).

This section is designed to provide our members with access to useful and thought-provoking content from industry events, webinars or NI Branch meetings that members may have missed.

The latest presentation to be added to the Members' Area is *Wind farm vessels - operational challenges*, from our latest London Branch meeting. Content includes the logistical challenges of wind farms, the advantages of CTV design and technology and operational challenges.

Members, if you are interested in wind farm development, [log in to the Members' Area](#) and click the 'Presentations' section.

Not a member? Find out how we can help you to invest in your career here: www.nautinst.org/membership

Get 40% off a Nautical Institute bestseller



One of The Nautical Institute's best-selling publications, *Casualty Management Guidelines*, is Book of the Month during March.

Developed in association with the International Salvage Union, *Casualty Management Guidelines* provides a comprehensive overview of what is involved in managing a casualty at sea. This is a complex process and can involve a bewildering number of people and agencies, and all too often, some of those players have no idea how everyone's roles interact.

This handbook includes straightforward and practical information and is essential to anyone who is ever likely to be involved in this situation (and for all those who hope not to be).

During the month of March, *Casualty Management Guidelines* is available at a discounted price of £27 (usually £45). To place an order, please email: pubs.admin@nautinst.org

Get your Navigation Assessor Certificate



The Nautical Institute champions professional development, and the Navigation Assessor Course is just one of our CPD services.

Since its launch last year, over 180 navigation assessors have completed the course in more than 13 cities.

"This course brings real life, up-to-date material which is very new and nothing more than three months old into the lecture room" said a recent course attendee.

The course will benefit Masters preparing to be assessed, inspectors, surveyors, superintendents, marine managers, marine consultants and anyone who needs to demonstrate the requirements of TMSA3 element 5.

Participants are taught how to conduct a thorough and effective assessment and prepare the post-assessment report. Those who complete the theory and practical elements are awarded a Nautical Institute Navigation Assessor's Certificate.

The Nautical Institute's Navigation Assessor Course can be found at various locations around the world and is conducted by navigation assessor expert and Navigation Assessor Course Programme Manager, Captain Mark Bull FNI.

Find a location near you and book your place by emailing: Susie.Stiles@nautinst.org

All Nautical Institute members are eligible for a discount on the course rate.

GREECE: 7-8 March 2018

SINGAPORE: 12-13 March 2018

EXTRA DATE ADDED

SINGAPORE: 15-16 March 2018

HONG KONG: 19-20 March 2018

HOUSTON: 3-4 April 2018

ANTWERP: 12-13 April 2018

DUBAI: 16-17 April 2018

We are an international network of professionals



With over [50 branches all over the world](#), The Nautical Institute's professional community is vibrant, pro-active and is open to all.

Our Branches aim to provide a local professional focus, networking opportunities, technical and social meetings, seminars and professional development assistance. You can find a Branch meeting local to you and other industry events via our online [Events](#) listings.

NI Jobs Board

Marine Engineering Officers

Apply Now

Harbour Master/Operations Manager

Apply Now

Master Mariner - Marine Surveyor/ Consultant

Apply Now

Nautical Instructor - Ship Handling

Apply Now

For more jobs like this and information on how to advertise a job with us, visit:

<https://jobs.nautinst.org>

Publications



Book of the Month:

Casualty Management Guidelines

Full price: £45.00
March price: £27.00

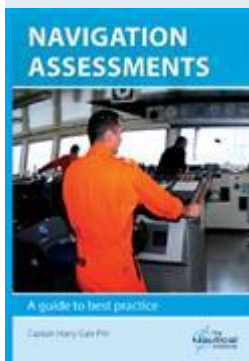
Buy Now



Shiphandling Logbook

Full price: £35.00
NI Member price: £24.50
10+ copies: £21.00

Buy Now



Navigation Assessments

Full price: £45.00
NI Member price: £31.50
10+ copies: £27.00

[Buy Now](#)

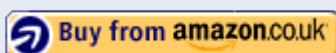


Guidelines for Collecting Maritime Evidence & Handbook

Full price: £50.00
NI Member price: £35.00
10+ copies: £30.00

[Buy Now](#)

[Browse the Institute's online bookstore](#)



Events guide (discounts for NI members)

The Institute has a network of over 70 branches and development contacts worldwide and many organise local events, some of which may not be listed below. Check with your [local Nautical Institute branch](#) for details of their activities.

CPD certificates are provided at many Nautical Institute events - please check with the event organiser.

[2 March - Memorial Service to celebrate the life of David Shepherd CBE](#)

Southwark Cathedral, London Bridge, London SE1 9DA

[2 March - Sri Lanka Branch - Maritime and Cyber Security for Sri Lanka](#)

9:00 am | General Sir John Kotelawela Defence University (KDU), Kandawala Road, Ratmalana, Colombo

[5 March - London J.I.M. Organised by HCMM - Vision & Decision by CHIRP Maritime](#)

5:30 pm | HQS Wellington, Temple Stairs, Victoria Embankment, WC2R 2PN

[7-8 March - Navigation Assessors Course - Athens](#)

K C Lyrantzis Group, 26 Akti Poseidonos, Piraeus, Greece 185 31 **(NI members receive discount)**

[12 March - UAE Branch - VAT legislation in the UAE](#)

Dubai International Seafarer Centre

[12-13 March - Navigation Assessors Course - Singapore](#)

Swire Marine Training Centre, Loyang **(NI members receive discount)**

[15-16 March - Navigation Assessors Course - Singapore](#)

Swire Marine Training Centre, Loyang **(NI members receive discount)**

[16 March - Wellness at Sea Conference 2018](#)

Inmarsat, 99 City Road, London EC1Y 1AX **(NI members receive 10% discount)**

[19-20 March - Navigation Assessors Course - Hong Kong](#)

Cliftons Hong Kong, Hutchison House, Central, Hong Kong **(NI members receive discount)**

[20-23 March - GST & Shipping2030 Europe](#)

Tivoli Congress Centre, Copenhagen **(20% discount available)**

[22 March - NW England & N Wales Branch - The History of Carmet Tugs](#)

6:00 pm | LJMU, Byrom Street, Liverpool, L3 3AF

[22 March - Solent Branch - Red Jet 6 Project](#)

6:00 pm | On board Red Funnel Ferry

[3-4 April - Navigation Assessors Course - Houston](#)

Houston International Seafarers' Center, Houston Texas, USA **(NI members receive discount)**

[11 April - Ireland Branch - S-Mode and the Bridge Displays of the Future followed by AGM 2018](#)

7:00 pm | National Maritime College of Ireland, Ringaskiddy, Co. Cork

[12-13 April - Navigation Assessors Course - Antwerp](#)

Portview, 10th floor Ahlers House, Noorderlaan 139, Antwerp **(NI members receive discount)**

[16-17 April - Navigation Assessors Course - Dubai](#)

Armada BlueBay Hotel **(NI members receive discount)**

[17-20 April - Arctic Shipping Forum 2018](#)

Helsinki **(NI members receive 20% discount)**

[18-19 April - 20th Ballast Water Management Conference](#)

Vallejo, California, USA **(NI members receive 15% discount)**

[19 April - NW England & N Wales Branch - Pilotage and the impact of Liverpool 2](#)

6:00 pm | LJMU, Byrom Street, Liverpool, L3 3AF

[20-21 April - London Branch Conference - The future of maritime professionals](#)

Novotel, Victoria Street BS1 6HY BRISTOL UK **(NI members receive discount)**

[20 April - US Gulf Branch - Seafarer Mental Health](#)

West Gulf Maritime Association, 1717 Turning Basin Dr #200, Houston, TX 77029, USA

[22-27 April - Singapore Maritime Week 2018](#)

Singapore

[26 April - Solent Branch - Autonomous Vessels, a real revolution](#)

Warsash Maritime Academy

[16-17 May - 22nd HR & Crew Management Summit 2018](#)

Singapore **(NI members receive 15% discount)**

[16-17 May - Unmanned Maritime Systems](#)

London **(NI members receive £100 discount)**

[17 May - NW England & N Wales Branch - 21st Century Seafarer as seen by a current seafarer](#)

5:00 pm | Fleetwood Nautical Campus, FY7 8JZ

[23-24 May - The Nautical Institute Technical Seminar & AGM 2018](#)

Cavalieri Art Hotel, Malta **(NI members receive discount)**

[23-24 May - CrewConnect Europe](#)

Radisson blu Hamburg, Hamburg **(20% discount available - use VIP code: FKT3422NI)**

[27 May-2 June - 19th IALA Conference - Successful voyages, Sustainable planet - A New Era for](#)

[Marine Aids to Navigation in a Connected World](#)

Songdo ConvensiA, Incheon, Republic of Korea

[4-8 June - Posidonia - The International Shipping Exhibition 2018](#)

Athens, Greece

[25-28 June - IHMA Congress 2018](#)

Royal Lancaster Hotel, Lancaster Terrace, London W2 2TY, UK **(20% discount available - use VIP code: FKT3462NINEWS)**

[4 July - Solent Branch - AGM2018 and SOSREP](#)

Seawork

[5-6 July - Oil Spill India 2018 Global Conference & Exhibition](#)

The Manekshaw Centre, New Delhi, India

[12-13 September - Marine Surveying International Fest 2018](#)

Online

[13 September - Solent Branch - Port Marine Safety Code](#)

Southampton Solent University (TBC)

[2-3 October - e-Navigation underway 2018 North America](#)

California State University

[4 October - Solent Branch - IALA](#)

Southampton Solent University (TBC)



Thank you to all those supporting our MARS safety scheme



[AR Brink and Associates](#)



[Transas](#)



[UK P&I Club](#)



[Louis Dreyfus Armateurs](#)



[LOC](#)



[AMSOL](#)



[UK Hydrographic Office](#)



[International Salvage Union](#)



[Maersk Training](#)



[BMT Surveys.](#)



[Videotel.](#)



[Martech Polar Consulting Ltd.](#)



[West of England P&I Club](#)



[InterManager](#)



[Marine Society & Sea Cadets](#)



[Britannia](#)



[IMCS](#)



[Masterbulk](#)



[TMC Marine](#)



[Caledonian MacBrayne](#)



[Menezes and Associates](#)



[Carnival Corporation](#)



[The Standard Club](#)



[EuroShip Services](#)



[Myanmar Excellent Stars](#)



[Hindustan Institute of Maritime Training](#)



[Chalos & Co PC](#)



[Swire Pacific Offshore](#)



[Chevron Shipping Company LLC](#)



[HC Maritime Consulting Pty Ltd](#)



[Nea Gnosi](#)



[The Swedish Club](#)



[Global Navigation Solutions](#)



[Stolt-Nielsen](#)



[Gigamare](#)



[New Zealand Maritime School](#)



[City of Glasgow College](#)



[NorthLink Ferries](#)



[Glasgow Maritime Academy LLP](#)



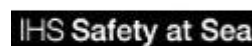
[Norwegian Hull Club](#)



[The Gdynia Maritime School](#)



[North of England P&I Club](#)



[IHS Safety at Sea](#)



[Commissioners of Irish Lights](#)



[Paramount Nautical](#)



[Constanta Maritime University](#)



[Steamship Mutual](#)



[Gard](#)



[Constellation Marine Services](#)



[The Shipowners' Club](#)



[EXMAR](#)



[The Port of London Authority](#)



[Epsilon Hellas](#)



[Philippine Transmarine Carriers](#)



[Dracares](#)



[Southampton Solent University](#)



[AMMA](#)



[IAMI](#)



[AMCOL](#)



[KASI](#)



[Seagull](#)



[Dokuz Eylul University](#)



[SAIMI](#)



[Marlins](#)

www.nautinst.org

The Nautical Institute • 202 Lambeth Road • London, England SE1 7LQ

Share



Follow us



This message was sent to sec@ninw.org.uk by [The Nautical Institute](http://www.nautinst.org). Follow this link to .